

# Air Quality Monitoring

## Dust and sulphur dioxide levels 2016

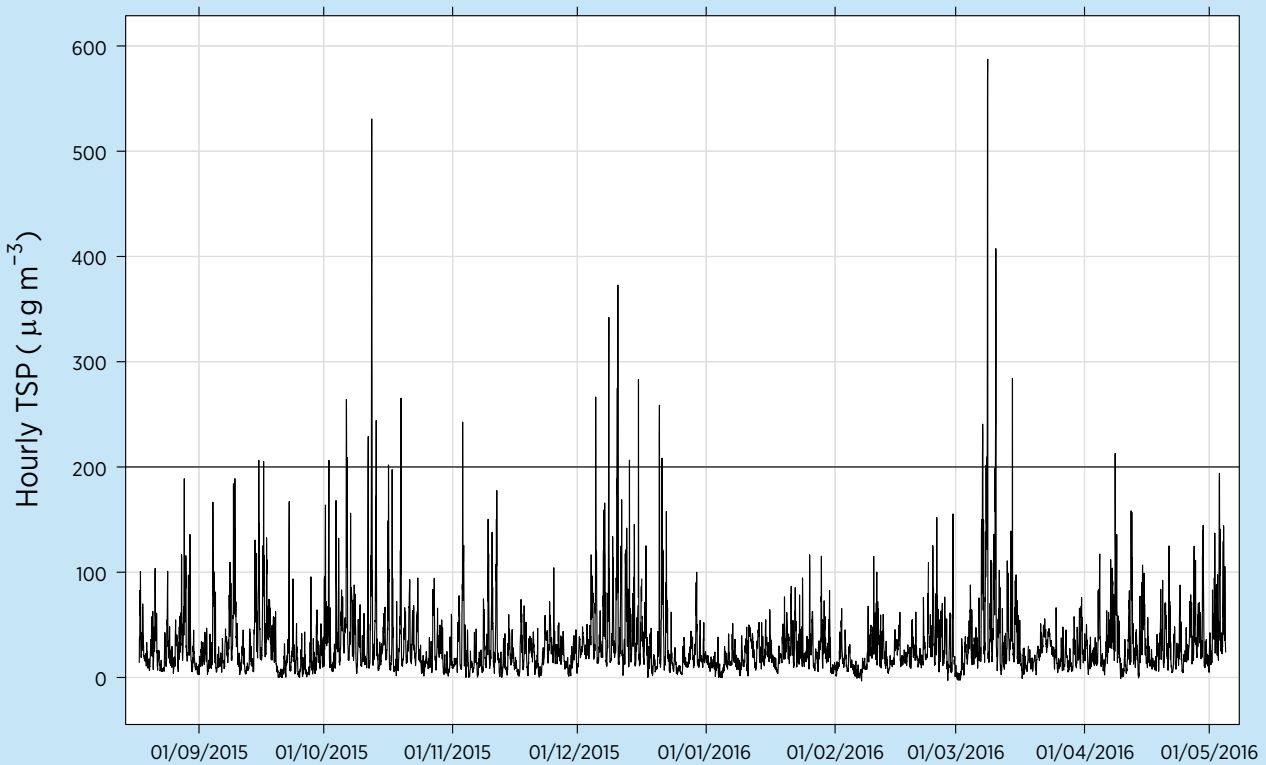
### Nuisance dust at Mt Maunganui

Monitoring of Total Suspended Particulate (TSP) at the Totara Street monitoring site shows that there are periods of time where dust levels exceed nuisance guidance levels. Wind data recorded for these elevated periods shows a strong relationship with winds from the westerly quarter.

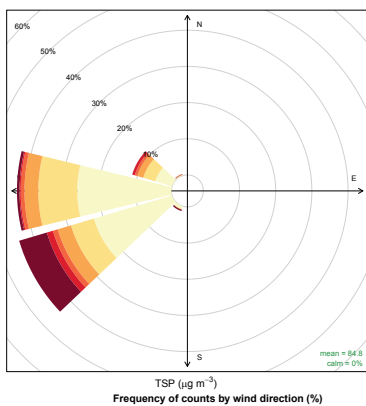
An audit process is under way looking at all aspects of Port of Tauranga activity at Mt Maunganui and Sulphur Point. This approach is similar to the successful dust reduction work undertaken within the Ngāpuna Industrial area in Rotorua.  
[www.boprc.govt.nz/environment/air/rotorua-air-quality/ngapuna-dust-plan](http://www.boprc.govt.nz/environment/air/rotorua-air-quality/ngapuna-dust-plan)

The regional council regularly assesses and reports on the amount of airborne fine particles at various locations. Data is collected from five air quality monitoring sites in Tauranga, Rotorua and Whakatāne.

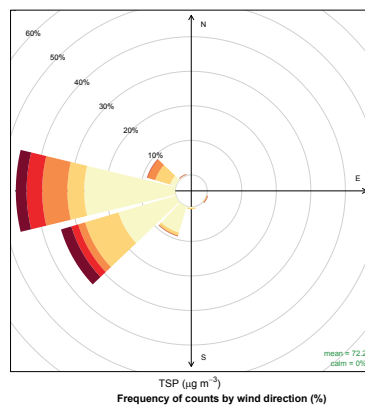
### Totara Street Monitoring Site



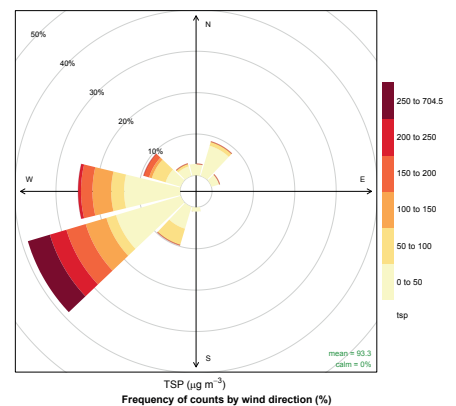
Totara Street Monitoring Site  
12/10/2015 to 13/10/2015



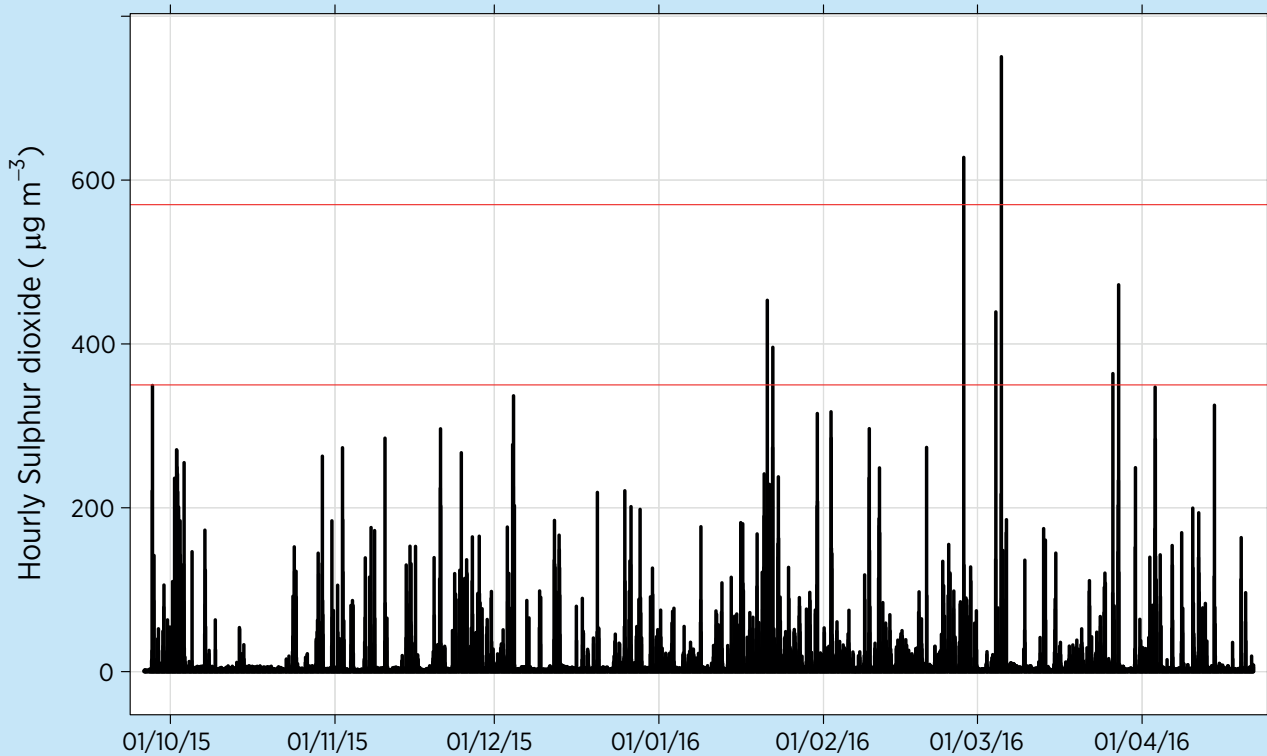
Totara Street Monitoring Site  
10/12/2015 to 11/12/2015



Totara Street Monitoring Site  
8/3/2016 to 9/3/2016

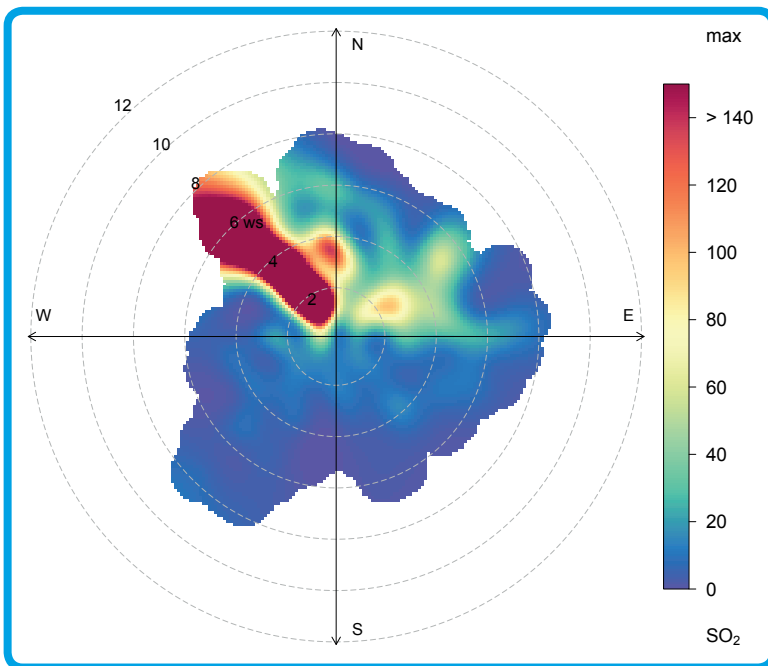


### Taiaho Place Monitoring Site



Above: A time series recorded at Taiaho Place showing exceedances of the National Environmental Standards.

Below: By combining 10-minute SO<sub>2</sub> and wind data sources of SO<sub>2</sub> can be identified.



### Key Points



Monitoring of SO<sub>2</sub> levels has been undertaken at Taiaho Place, Mt Maunganui since September 2015. Seven occasions have been recorded where levels are above the 350µg/m<sup>3</sup> standard.

On two occasions these levels exceeded the 570µg/m<sup>3</sup> standard. By using wind information recorded at the same time sources of SO<sub>2</sub> can be determined. Council is working with closely affected parties and industrial sites within the area to address this issue.



New sites were installed at Taiaho Place (September 2015) and Tauranga Bridge Marina (April 2016) to focus on industrial emissions.